

Carpet cleaning (portable mode)

1. Step on the portable spot cleaning pedal and lift up to release the portable spot cleaner
2. Fill the tank following instruction #1 under Carpet Cleaning (Upright Mode)
3. Release flex hose by turning the hose secure latch
4. Plug power cord into proper outlet and press the power button
5. Cleaning
 - a. Clean by pressing the trigger on the flex hose to spray solution onto the area to be cleaned
 - b. Slowly scrub the tool back and forth over the soiled surface
 - c. Tilt the tool forward to suction liquid
6. Empty dirty tank when it reaches the "FULL" line following instruction #3 under Carpet Cleaning (Upright Mode)
7. When cleaning is complete, replace unit on base of machine
 - a. Align the product as image 7a shows and firmly push down the portable spot cleaner until it is secured on both sides
 - b. Check gray latches on both sides to confirm it is secured.

NOTE: Portable spot cleaner must be fully secure to operate in upright mode



For additional tips and troubleshooting

Please refer to User's Guide
Visit: www.bissell.com

© 2012 BISSELL Homecare, Inc.
BISSELL Homecare, Inc.
P.O. Box 1888
Grand Rapids, MI 49501
Part #120-4562



LIFT-off[®]
DEEP CLEANER

66E1, 80X9,
30K7, 24A4 SERIES

BISSELL is happy to be of service.
Contact us directly at **1-800-237-7691** or
visit the website for helpful instructions at
www.bissell.com

PLEASE DO NOT RETURN THIS PRODUCT TO THE STORE
PLEASE KEEP FOR FUTURE REFERENCE

Quick Start Guide

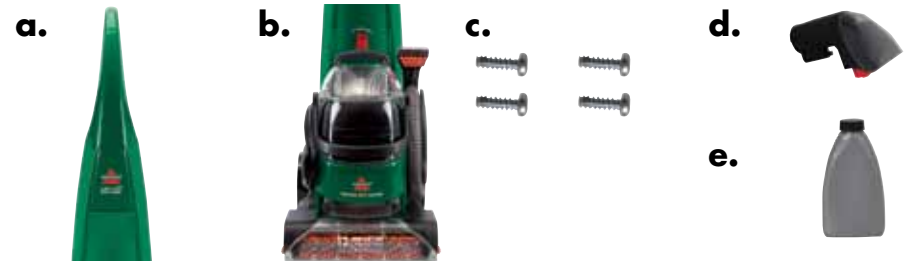
WARNING:

Refer to the enclosed user guide for complete instructions and important safety notices.

Package contents:

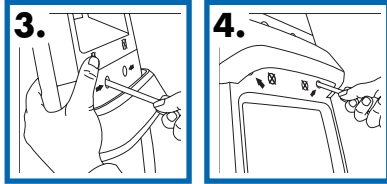
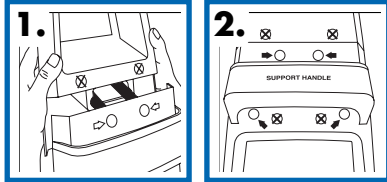
- | | |
|--------------------------------------|--|
| a. Upper Handle | d. Tool Attachment(s)
(varies by model) |
| b. Portable Spot Cleaner/Base | e. BISSELL 2X Formula
(varies by model) |
| c. 4 Screws – taped to handle | |

TOOLS NEEDED: Standard #2 X 4 inch Phillips head screw driver
Color and tools may vary depending on the model you purchased



Assembly

1. Slide upper handle onto body of machine
2. Locate the screws (taped to handle) and the 4 screw holes marked by arrows
NOTE: 2 screw holes are located under the support handle
3. Firmly holding the upper handle in place, screw 2 screws into the marked holes at an upward angle above the support handle
4. Screw the remaining 2 screws at an upward angle into the marked outmost holes under the support handle.
5. Wrap power cord around cord wrap (located on the side of the portable spot cleaner)
6. Attach tough stain tool to end of hose (extra tool storage located on back)
7. Wrap flex hose and secure with hose latch (located on opposite side of cord wrap)



Before carpet cleaning

1. Move furniture to another area if cleaning an entire room
2. Vacuum area with a dry vacuum cleaner
3. PreTreat spots & stains and heavy traffic areas (optional—see User's Guide)

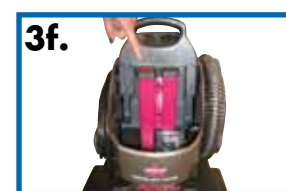
Carpet cleaning (upright mode)

1. Fill the formula & water tank
 - a. Remove the formula tank from the base of the machine (located on back of portable spot cleaner)
 - b. Unscrew the black cap and remove insert
 - c. Fill tank with hot tap water to the WATER fill line and add two ounces of BISSELL 2X formula
 - d. Replace the insert and tighten black cap
 - e. Replace formula tank on machine



Carpet cleaning (upright mode)

2. Cleaning
 - a. Plug the power cord into a proper outlet and press the power button
 - b. Check to verify that the heat indicator light is illuminated.
If heat indicator light does not illuminate, release the pod and re-secure by pushing firmly until both sides snap into place.
NOTE: Allow 1 minute for hot water heater to warm-up
 - c. While pressing the trigger, make one slow forward wet pass and another one back
 - d. Release the trigger and make another slow forward and backward pass over the same area. Repeated passes will help remove moisture.
 - e. Continue passes until the cleaning area is complete
3. Empty dirty tank when it reaches the "FULL" line
 - a. Press the power button to turn off the machine
 - b. Remove dirty tank
 - c. Unlock the tank lid by rotating the handle over the back of the tank
 - d. Remove lid to pour out dirty water and rinse
 - e. Replace top of tank and rotate the handle forward to lock in place
 - f. Before replacing tank on machine wipe debris from red filter
4. Refill as needed following step #1 under Carpet Cleaning (Upright Mode) to continue cleaning



⚠ WARNING:
Unit will not function correctly if pod is not secured on both sides.